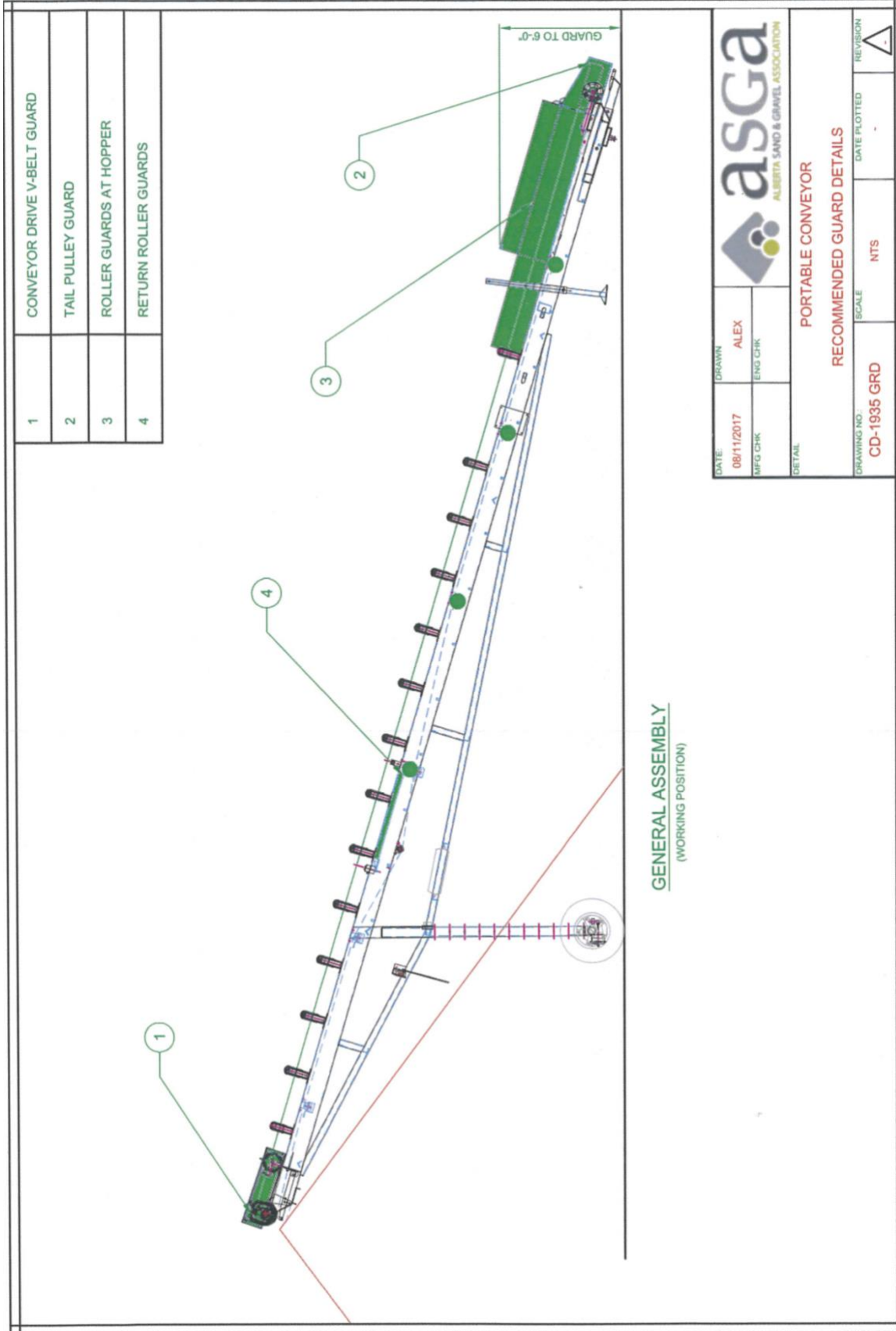
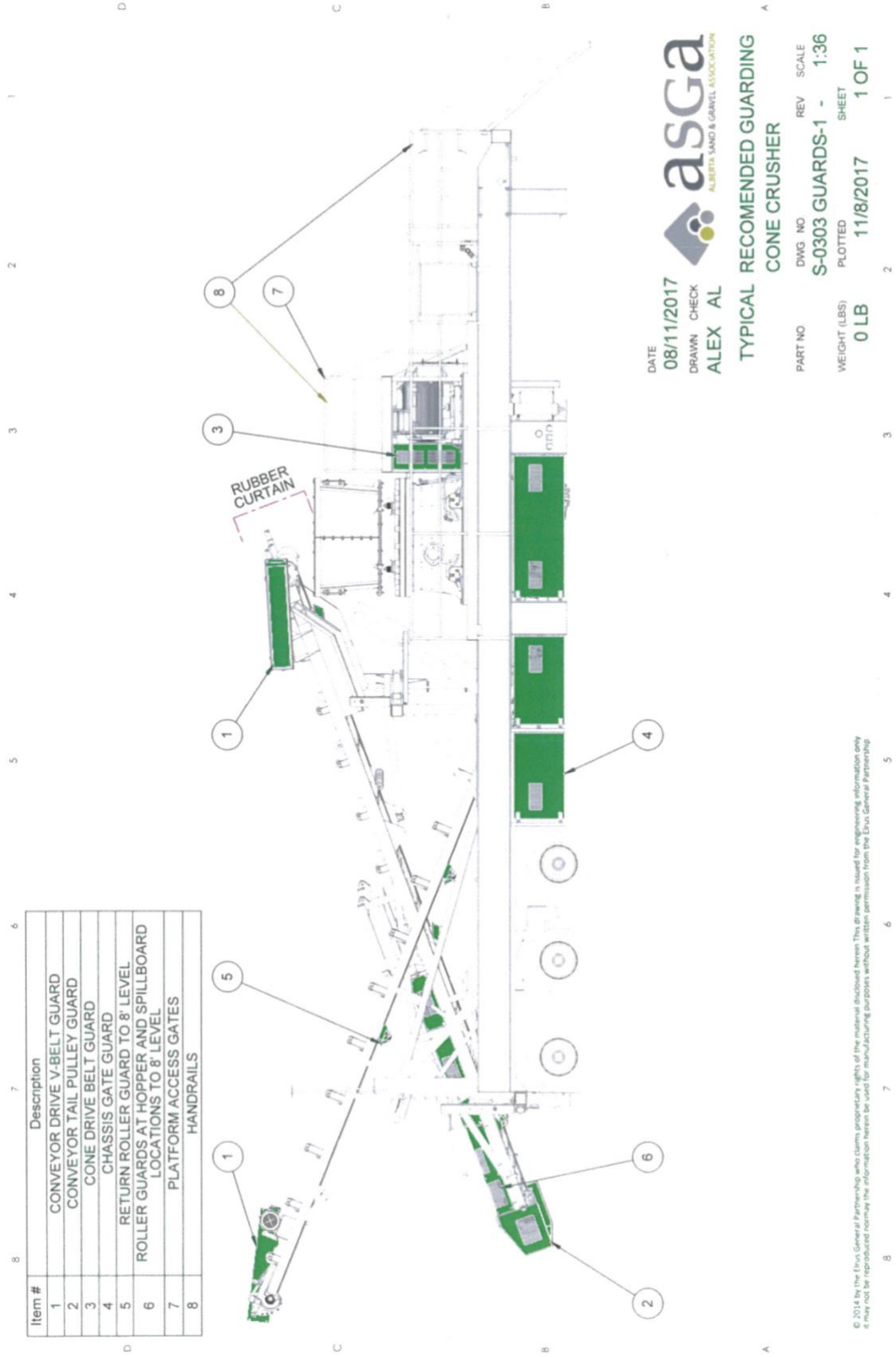


Portable Conveyor Guarding

1. [Portable Conveyor Guarding](#)
2. [Cone Crusher Guarding](#)
3. [Radial Stacker Guarding](#)
4. [Feeder Plant Guarding](#)
5. [Screen Plant Guarding](#)

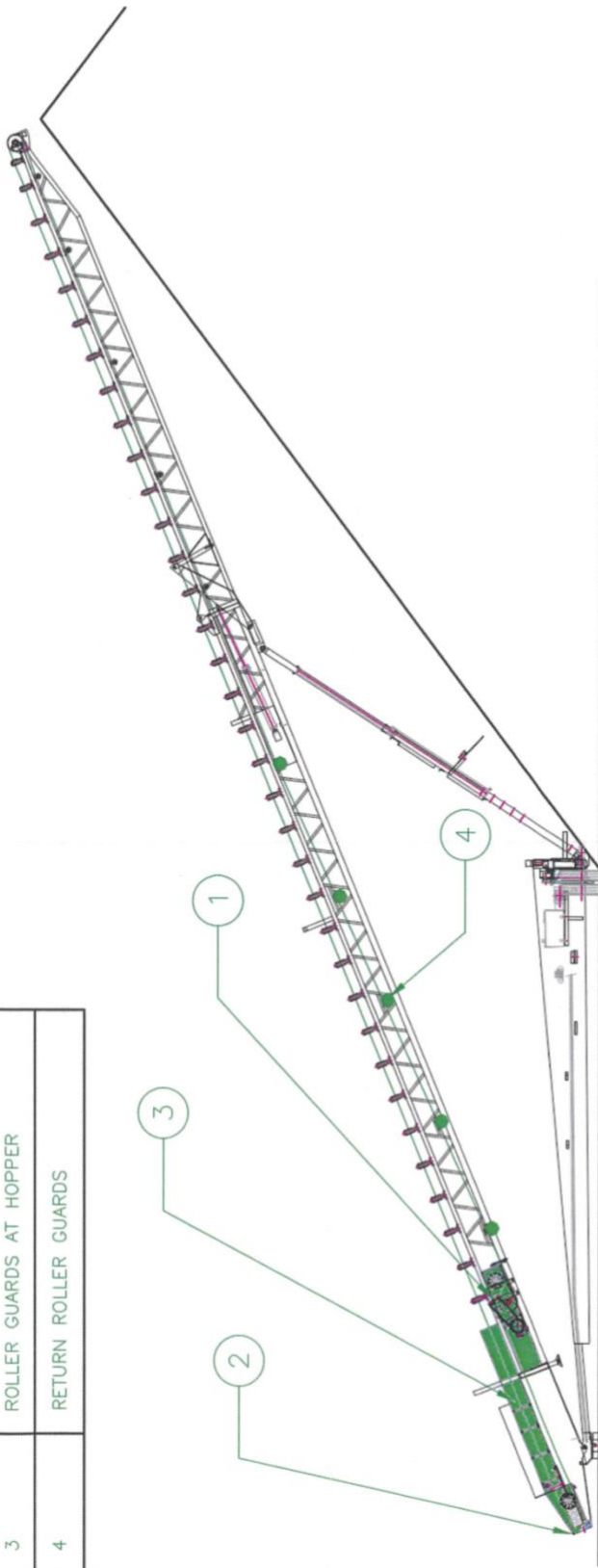


Cone Crusher Guarding



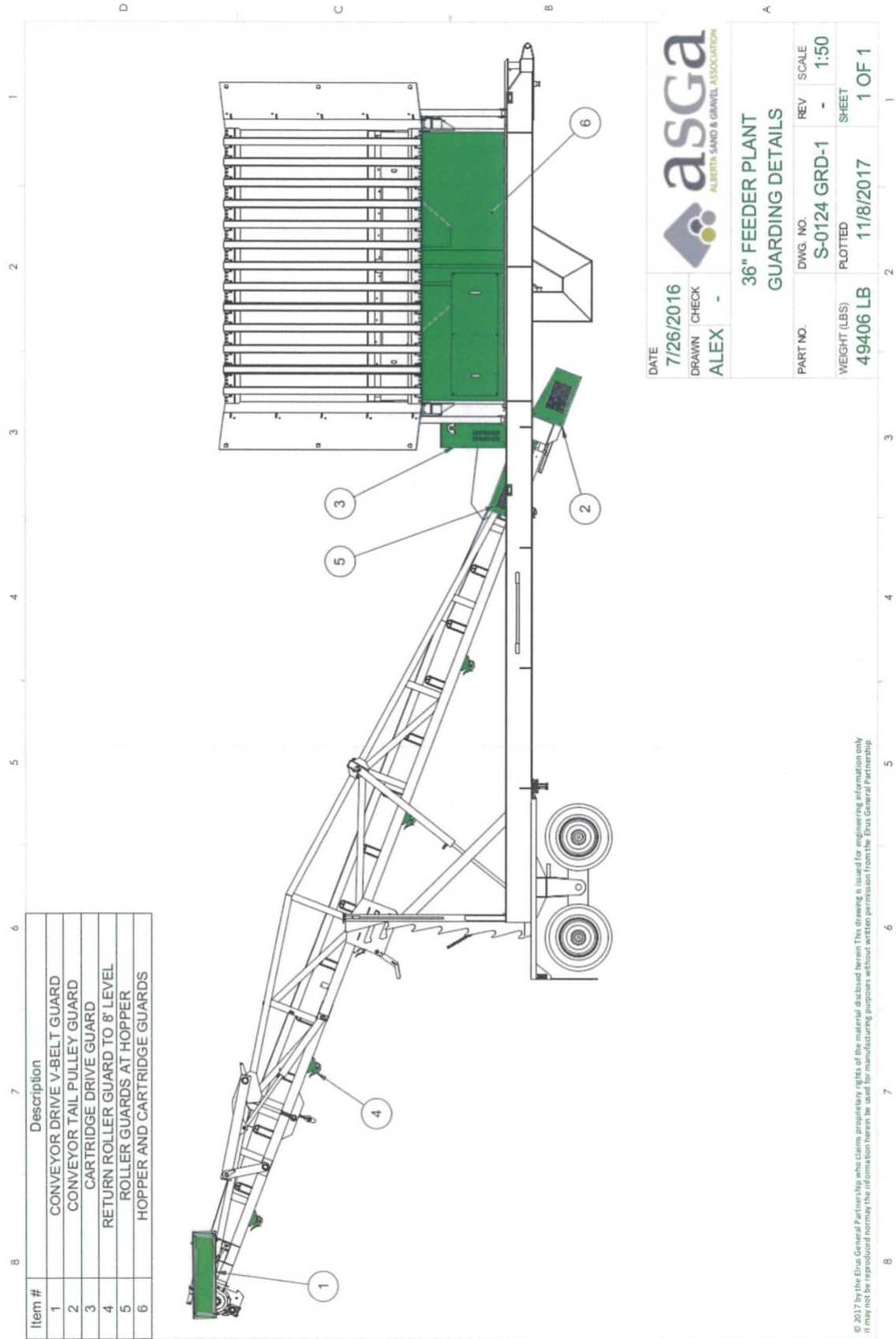
Radial Stacker Guarding

1	CONVEYOR DRIVE V-BELT GUARD
2	TAIL PULLEY GUARD
3	ROLLER GUARDS AT HOPPER
4	RETURN ROLLER GUARDS



DATE: 06/11/2017	DESIGN: ALEX	 asga <small>ALBERTA SAND & GRAVEL ASSOCIATION</small>
DWG. NO: CD-1347	DATE: 06/11/2017	
DETAIL: 125" RADIAL STACKER SINGLE FOLD GUARD DETAILS		
SCALE: NTS	SCALE: NTS	SCALE: NTS
REVISION NO.:	ONE PLOTTED	REVISION

Feeder Plant Guarding



Item #	Description
1	CONVEYOR DRIVE V-BELT GUARD
2	CONVEYOR TAIL PULLEY GUARD
3	CARTRIDGE DRIVE GUARD
4	RETURN ROLLER GUARD TO 8' LEVEL
5	ROLLER GUARDS AT HOPPER
6	HOPPER AND CARTRIDGE GUARDS

DATE: 7/26/2016
 DRAWN: ALEX
 CHECK: -



asga
ALBERTA SAND & GRAVEL ASSOCIATION

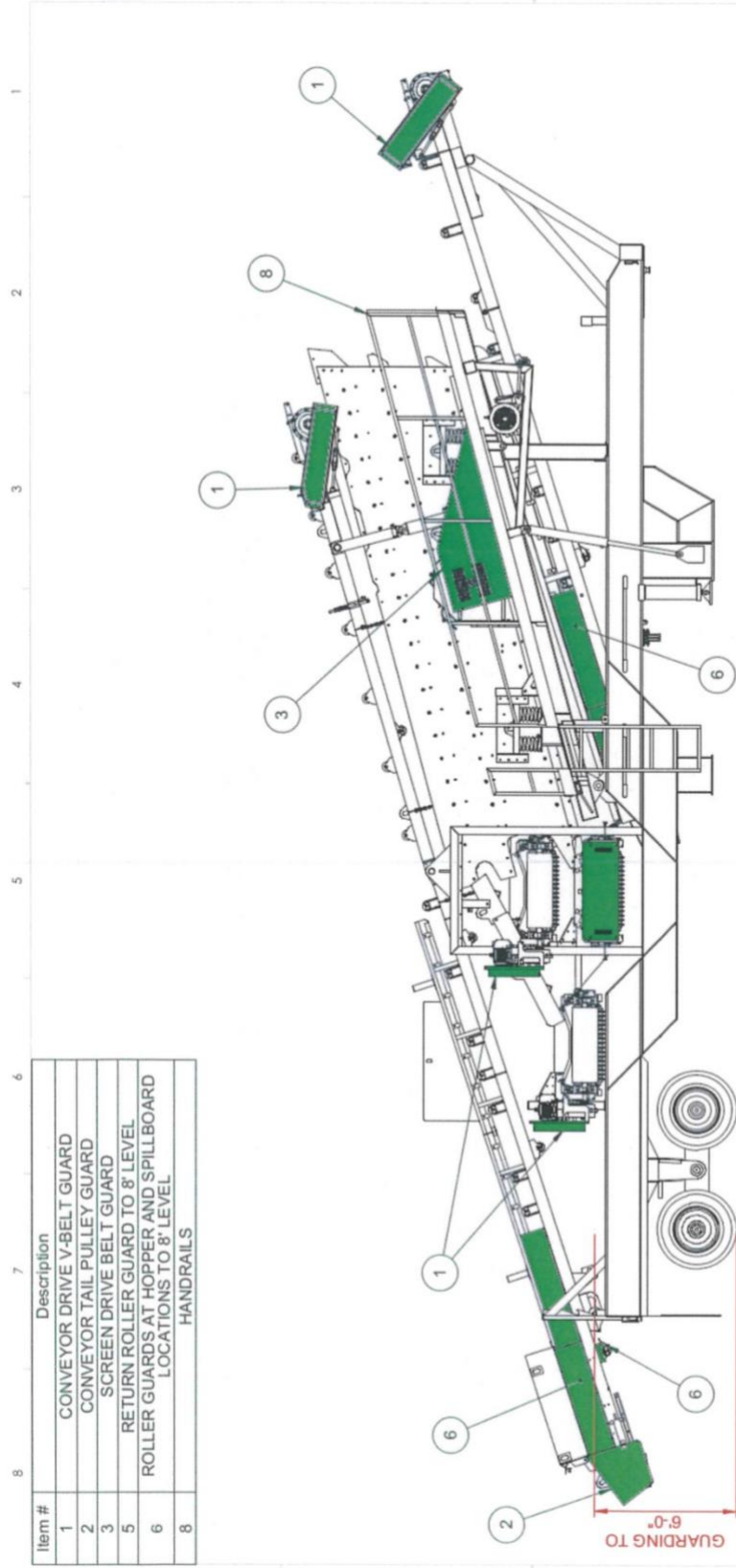
**36" FEEDER PLANT
GUARDING DETAILS**

PART NO. S-0124 GRD-1
 DWG. NO. S-0124 GRD-1
 REV. -
 SCALE 1:50

PLOTTED 11/8/2017
 WEIGHT (LBS) 49406 LB
 SHEET 1 OF 1

© 2017 by the Elus General Partnership who claims proprietary rights of the material discussed herein. This drawing is issued for engineering information only. It may not be reproduced nor may the information herein be used for manufacturing purposes without written permission from the Elus General Partnership.

Screen Plant Guarding



Item #	Description
1	CONVEYOR DRIVE V-BELT GUARD
2	CONVEYOR TAIL PULLEY GUARD
3	SCREEN DRIVE BELT GUARD
5	RETURN ROLLER GUARD TO 8' LEVEL
6	ROLLER GUARDS AT HOPPER AND SPILLBOARD LOCATIONS TO 8' LEVEL
8	HANDRAILS

DATE	7/26/2016	DWG. NO.	S-0603 GDS-1	REV	-	SCALE	1:50
DRAWN	ALEX	CHECK	-	PLOTTED	11/8/2017	SHEET	1 OF 1
STANDARD GUARDING PACKAGE SCREEN PLANT							
PART NO.	WEIGHT (LBS)						
	0 LB						

© 2014 by the Ethical General Partnership who claims proprietary rights of the material disclosed herein. This drawing is issued for engineering information only. It may not be reproduced nor may the information herein be used for manufacturing purposes without written permission from the Ethical General Partnership.

